

NIIGATA UNIVERSITY QUICK GUIDE

2025-2026



新潟大学
NIIGATA UNIVERSITY

ABOUT US

OVERVIEW

Niigata University has a long history and a rich tradition, with its predecessor organizations dating back about 150 years. Since its official inauguration, the university has played a key role as a center of higher education and research in Japan. Today, the university has developed into a large-scale, comprehensive university covering a varied range of academic fields, including humanities and social sciences, natural sciences, medical and dental sciences with 10 faculties, 5 graduate schools, two specialized research institutes and a university hospital.

The university actively promotes independent and creative studies for our students while also striving to be an international base for higher education and advanced research by promoting collaborative research and education with overseas universities and institutions. Located in Niigata City, facing the Sea of Japan, Niigata University acts as a gateway to the world with its base in Asia, and we will continue to elevate our presence to be world-leading and world-changing.

QUICK FACTS

FOUNDED

May 1949



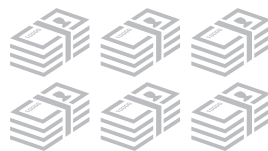
LOCATION

Niigata, Japan



ANNUAL BUDGET

JPY 72.9 billion yen



LAND

6,200,000 m²



BUILDING

480,000 m²



ENROLLMENT

(As of May 1st, 2025)

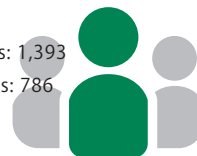
Total: 12,159

Undergraduate: 9,980

Graduate: 2,179

Master's Students: 1,393

Doctoral Students: 786



EMPLOYEES

(As of May 1st, 2025)

Total: 3,282

Board Member: 10

Faculty: 1,524

Staff: 1,748



WORLD RANKINGS

THE Life Sciences (2025)

#501~600

THE Medical and Health (2025)

#601~800

QS Dentistry (2025)

#51~120

QS Medicine (2025)

#551~600

ARWU Earth Sciences (2024)

#201~300



STUDY YEAR

First Semester (Spring):

April 1 – September 30

(Most classes run from early April to early August)



Second Semester (Fall):

October 1 – March 31

(Most classes run from early October to early February)





The Main Gate of Ikarashi Campus

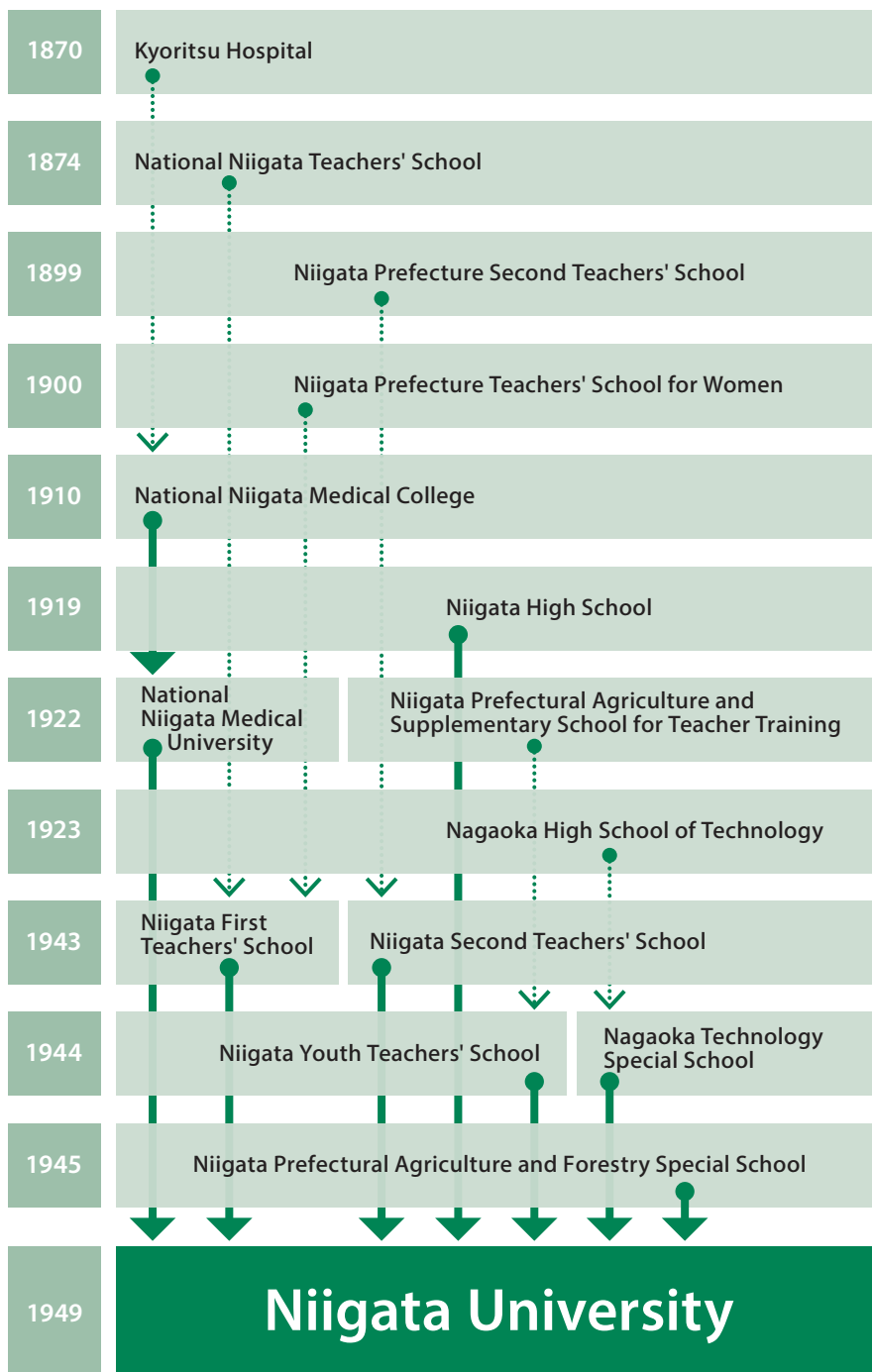


The Front Gate of Faculty of Medicine on Asahimachi Campus



Ikarashi Campus

HISTORY



National Niigata Medical College



Niigata High School



Niigata University Head Office



1st Niigata University Graduation Ceremony

UNDERGRADUATE

10 Faculties
38 Degree-Granting Programs



FACULTY OF HUMANITIES



Degrees offered: Bachelor of Arts

Number of students: 917

Programs:

- Psychology and Human Studies
- Society and Culture
- Languages and Cultures



FACULTY OF EDUCATION



Degrees offered: Bachelor of Education

Number of students: 772

Programs:

- Teacher Training



FACULTY OF LAW



Degrees offered: Bachelor of Laws

Number of students: 745

Programs:

- Legal Education
- Legal Profession



FACULTY OF ECONOMIC SCIENCES



Degrees offered: Bachelor of Economics
Bachelor of Management
Bachelor of Arts

Number of students: 1,477
(Faculty of Economic Sciences; 1,469,
Faculty of Economics; 8)

Programs:

- Economic Studies
- Management Studies
- Interdisciplinary Japanese Studies
- Regional Leadership



FACULTY OF SCIENCE



Degrees offered: Bachelor of Science

Number of students: 894

Programs:

- Mathematics
- Physics
- Chemistry
- Biology
- Geology
- Environmental Science
- Field Research in the Environmental Sciences



FACULTY OF ENGINEERING



Degrees offered: Bachelor of Engineering

Number of students: 2,299

Programs:

- Mechanical Engineering
- Civil and Environmental Engineering
- Electronics, Information and Communication Engineering
- Smart Information Systems
- Chemistry and Chemical Engineering
- Materials Science
- Architecture
- Interdisciplinary Program of Biomedical Engineering, Assistive Technology and Art and Sports Sciences
- Engineering Management



FACULTY OF AGRICULTURE



Degrees offered: Bachelor of Agriculture

Number of students: 756

Programs:

- Applied Life Science
- Food Science
- Agriculture and Bioresources
- Environmental Science for Agriculture and Forestry
- Field Research in the Environmental Sciences



FACULTY OF MEDICINE SCHOOL OF MEDICINE



Degrees offered: Doctor of Medicine

Number of students: 817

Programs:

- Medicine



FACULTY OF MEDICINE SCHOOL OF HEALTH SCIENCES



Degrees offered: Bachelor of Science in Nursing
Bachelor of Health Sciences

Number of students: 667

Programs:

- Nursing
- Radiological Technology
- Medical Technology



FACULTY OF DENTISTRY



Degrees offered: Doctor of Dental Surgery
Bachelor of Oral Health and Welfare

Number of students: 352

Programs:

- Dentistry
- Oral Health and Welfare



COLLEGE OF CREATIVE STUDIES



Degrees offered: Bachelor of Arts

Number of students: 284

Programs:

- Creative Studies

GRADUATE SCHOOLS

Integrated and Advanced Research
5 Schools: Master's and Doctoral Programs

**2 NEW GRADUATE SCHOOLS
TO BE ESTABLISHED IN APRIL 2026**

GRADUATE SCHOOL OF INTEGRATED ARTS AND SCIENCES (Opening in April 2026)



This School will be newly established as a Master's-only graduate school through the integration of the Master's programs of the School of Modern Society and Culture and the School of Science and Technology.

Degrees offered

- Master of Philosophy ● Master of Arts ● Master of Law
- Master of Public Administration ● Master of Economics
- Master of Business Administration ● Master of Science
- Master of Engineering ● Master of Agriculture



GRADUATE SCHOOL OF MEDICINE, DENTISTRY AND HEALTH SCIENCES (Opening in April 2026)



This School will be established through the merger of two existing graduate schools in the fields of medicine, dental sciences, and health sciences.

Degrees offered

- Master of Biomedical Science ● Master of Health Sciences
- Master of Oral Health and Welfare Science ● Doctor of Philosophy (Health Sciences)
- Doctor of Philosophy (Oral Health and Welfare Science) ● Doctor of Philosophy
- Doctor of Philosophy (Medical Science) ● Doctor of Philosophy (Dental Science)



GRADUATE SCHOOL OF MODERN SOCIETY AND CULTURE

Degrees offered

- Doctor of Philosophy ● Doctor of Philosophy in Literature ● Doctor of Laws
- Doctor of Philosophy in Economics ● Doctor of Philosophy in Education



GRADUATE SCHOOL OF SCIENCE AND TECHNOLOGY

Degrees offered

- Doctor of Philosophy ● Doctor of Philosophy in Science
- Doctor of Philosophy in Engineering ● Doctor of Philosophy in Agriculture



PROFESSIONAL SCHOOL OF TEACHER EDUCATION

Degrees offered

- Master of Education



AFFILIATED FACILITIES

Niigata University is home to a university hospital providing high-quality, patient-centered medical care and two research institutes, both of which are one of the world's leading research institutes.

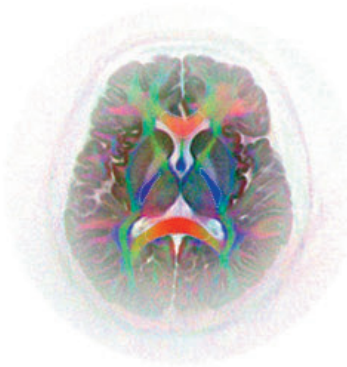
NIIGATA UNIVERSITY MEDICAL & DENTAL HOSPITAL

A regional, function-specific hospital with a total of 37 departments (32 medical and 5 dental) and 827 beds, providing high-level and advanced medical treatment.



BRAIN RESEARCH INSTITUTE

Established in 1967 as the first affiliated research institute of the national universities in Japan on brain in order to elucidate scientific principles relevant to the brain function and mechanisms of brain diseases.



RESEARCH INSTITUTE FOR NATURAL HAZARDS AND DISASTER RECOVERY

Established in April of 2011, aiming to further the scientific study of disaster mitigation by sharing its research findings with the rest of the world.



University-wide Organization for Research and Education

SAKEOLOGY CENTER

As the world's first base, in collaboration with Niigata prefecture and the Niigata Sake Brewers Association, the center aims to develop "Sakeology", which is an academic discipline covering a broad variety of cultural and scientific fields concerning sake through education, research, international exchange and providing information.



ASIAN LINK RESEARCH CENTER

Aiming at conducting interdisciplinary research for building society in near future by addressing the social needs of East Asia. A further objective is to support development of leaders closely related to such research.



SADO ISLAND CENTER FOR ECOLOGICAL SUSTAINABILITY

Established in April, 2019, by integrating three existing institutions of Niigata University to be a research and education base for field science related to nature on Sado Island.



BIG DATA ACTIVATION RESEARCH CENTER

Since data science and artificial intelligence are common research and educational foundations, this center aims to create new knowledge from vast and diverse big data and realize interdisciplinary and industry-academia collaboration.



INTERNATIONAL AFFAIRS

We have gained momentum as one of the Japan's most ambitious, research-led universities building networks with partner institutions overseas.

OVERSEAS PARTNER INSTITUTIONS (As of May 1st, 2025)
: 363 cases with 47 countries/regions



INTERNATIONAL STUDENTS

There are 459 students from 55 countries or regions studying at Niigata University as of May 1st, 2025.



OVERSEAS OFFICES

- Beijing Liaison Office
- Sri Lanka Liaison Office
- Infectious Diseases Research Center of Niigata University in Myanmar
- Office of the International Education Program G-MedEx in Russia (Established by Faculty of Medicine)

LIAISON PROFESSOR OF NIIGATA UNIVERSITY

The "Liaison Professor of Niigata University" is selected by the President of Niigata University in order to express appreciation for a contribution to the academic globalization of Niigata University by coordinating with their university and Niigata University in terms of education, research and student exchange activities. We expect that Liaison Professors will kindly continue to help us attain our goals: to internationally activate our education and research and to contribute more to international societies. As of May, 2025, there are 23 Liaison Professors from 16 countries.



ABOUT NIIGATA CITY

Niigata City is a beautiful port city with a population of about 800,000. Although the city allows people to lead their lives with comfort and convenience being a great domestic and international transportation hub, Japan's pristine landscapes can still be found and traditional culture remains untouched.



Where is Niigata?

Niigata City is located on the west coast of Japan.

- **The largest city** on the west coast in Honshu with a population of about **800,000**.
- It is a **transportation hub** with an international airport, international ports, convenient train service and highway networks.



Niigata

About 300 km north of Tokyo,
just a two-hour ride by bullet train.

Tokyo

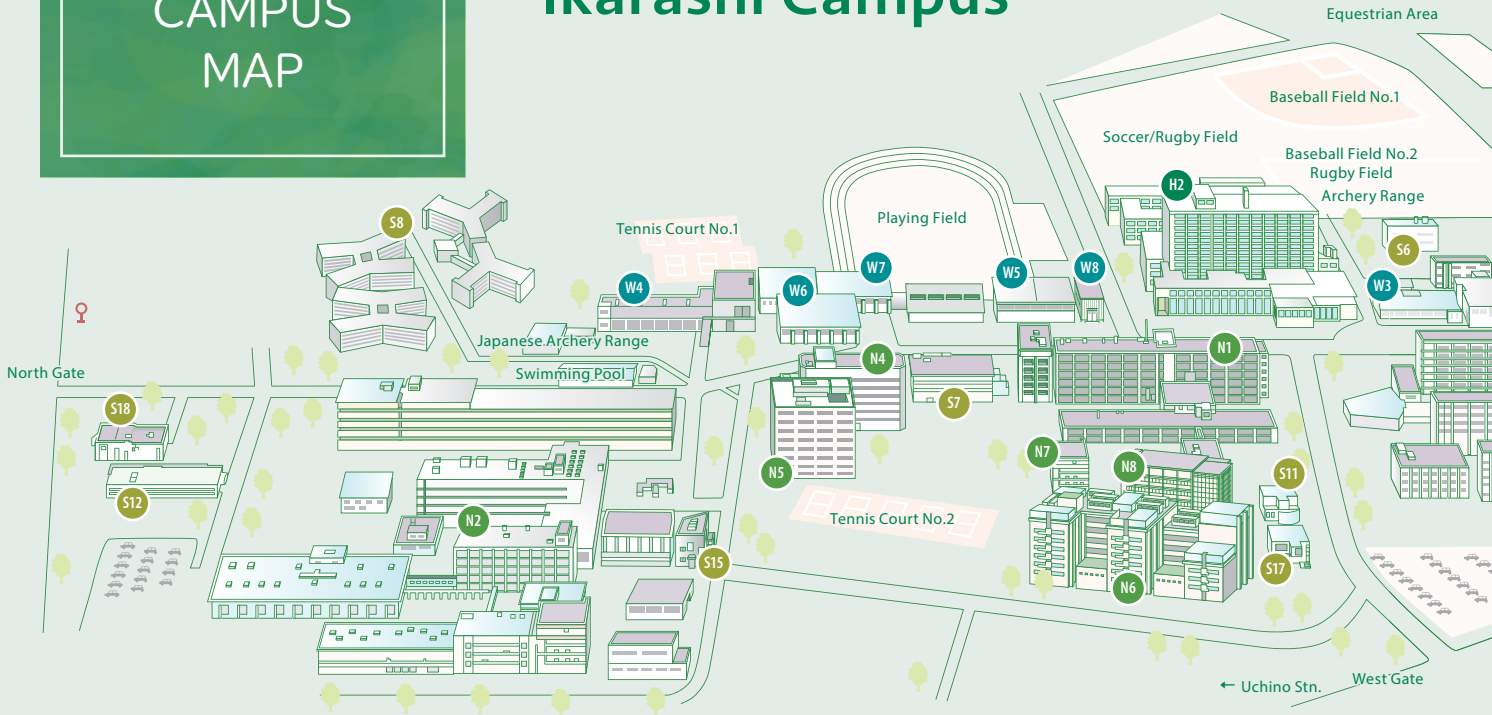


The Shinano River flowing through Niigata City



CAMPUS MAP

Ikarashi Campus



H1 Institute of Humanities and Social Sciences Building
Faculty of Law/Faculty of Economic Sciences/Asian Link Research Center

H2 Faculty of Education
Special Course for School Nurse-Teachers
Professional School of Teacher Education
Center for Teaching Profession
Department of International Affairs

H4 Graduate School of Modern Society and Culture

N1 Faculty of Science
Science Museum

N2 Faculty of Engineering

N3 Faculty of Agriculture

N4 Graduate School of Science and Technology

N5 Information Science and Technology University Institute Center

N6 Science of Matter and Industrial Science University Institute Center

N7 Life Science and Environmental Science University Institute Center

N8 Environmental Science and Energy Science University Institute Center

S1 Administration Bureau Building

S2 Shofu Hall

S3 Yuho Hall (Guest House)

S4 Health Administration Center

S5 University Library

S6 Center for Academic Information Service
Center for Diversity, Equity, and Inclusion

S7 Research Institute for Natural Hazards and Disaster Recovery

S8 Residence Halls

S9 International House

S10 Advanced Education and Research Building
Faculty of Humanities/College of Creative Studies
Career Support Office/Collaborative Education Support Office/
Student Support Desk/Admissions Office

S11 Joint Research Laboratory 2

S12 Joint Research Laboratory 1

S14 Guard House

S15 Yukyu Hall

S16 Gender Equality Office

S17 Research Collaboration and Promotion Office
Sakeology center

S18 Center for Environment and Safety

S19 Risk Management Center

H1 Medical & Dental Hospital
Outpatients Examination Building

H2 Medical & Dental Hospital
West Examination Building

H3 Medical & Dental Hospital
Central Examination Building

H4 Medical & Dental Hospital Ward

H5 Nursing Staff Dormitory

H6 Amenity Mall

H7 Niigata Medical Professionals
Development Center

H8 Ronald McDonald's House Niigata

B1 A Block, C Block

B2 Asahimachi Research Laboratory
Building / Center for Integrated
Human Brain Science

B3 Bioresource Science Branch
Genome Science Building

B4 Bioresource Science Branch
Animal Science Building

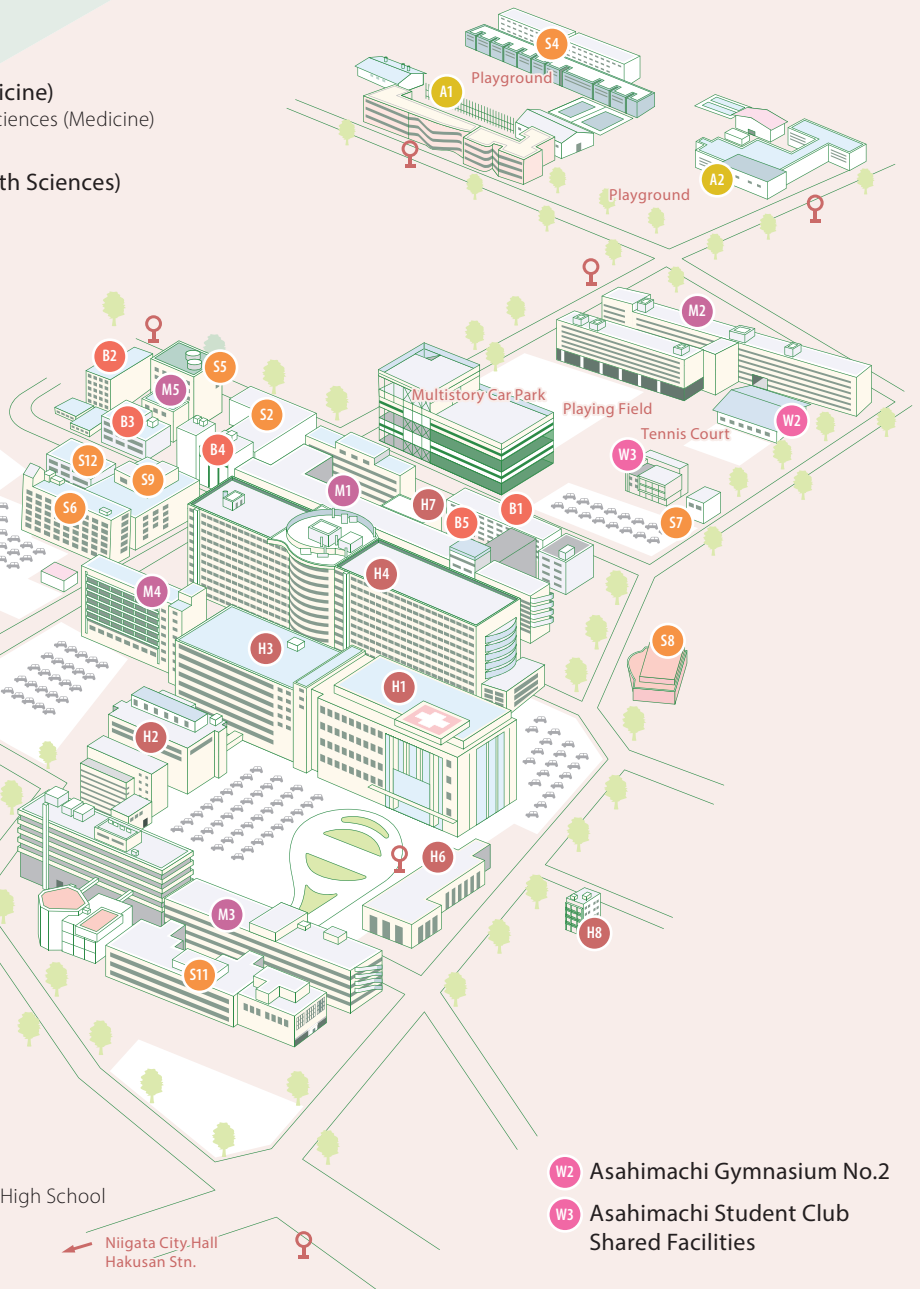
B5 B Block, D Block / Center for
Bioresource-based Researches



Asahimachi Campus

- M1 Faculty of Medicine (School of Medicine)**
Graduate School of Medical and Dental Sciences (Medicine)
Kidney Research Center
- M2 Faculty of Medicine (School of Health Sciences)**
Graduate School of Health Sciences
- M3 Faculty of Dentistry**
Graduate School of Medical and Dental Sciences (Dentistry)
- M4 General Administration and Research Building**
- M5 Kidney Research Building**

- S2 Central Power Station**
- S4 Staff Lodgings**
- S5 Radioisotope Center**
- S6 The Open University of Japan Niigata Study Center**
- S7 Asahimachi Museum**
- S8 Yujin Memorial Hall**
- S9 Asahimachi Branch of Niigata University Library**
- S10 Ayumi Nursery School**
- S11 Life Innovation Hub**
- S12 "Brain & Life" Innovation Hub (BIH)**
- A1 Attached Schools**
Niigata Elementary School/Niigata Junior High School
- A2 Attached Schools**
School for Special Needs Education



SCAN THE QR-CODE BELOW TO DOWNLOAD:



About NU

- University Profile
- President's Message
- Facts and Figures
- Living in Niigata
- Brochures / Videos etc.



Study at NU

- Admission Flow Chart
- Degree Programs (Undergraduate/Graduate)
- Non-Degree Programs (Research Student/Exchange Student Program/Short Term Program)
- Japanese Language Programs
- Fees & Scholarships
- Student Life
- Career Support etc.



Research

- Feature
- Find Researchers etc.



Global Engagement

- Overseas Partner Institutions
- Liaison Professor of Niigata University
- Database for NU International Collaborative Activity etc.

Office of International Partnerships
 Department of International Affairs
 8050 Ikarashi 2-no-cho, Nishi-ku, Niigata, 950-2181, JAPAN
 TEL +81-25-262-6935
 FAX +81-25-262-7519
 E-mail kokusai@adm.niigata-u.ac.jp
<https://www.niigata-u.ac.jp/en/>



**NIIGATA
UNIVERSITY**