

ANPIC

- Safety Confirmation System - User's Guide



What is ANPIC?



- ANPIC confirms the safety of NU students and staff members quickly and effectively.
- In case of any disaster, NU send you a safety confirmation to your email address, app, and LINE.
- All users are required to report their safety situation.
- In order to certainly receive ANPIC notifications, please pre-register your LINE, app, and mobile phone email address.



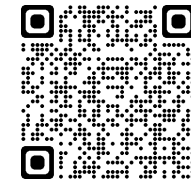
Registration and login screens are in Japanese.

Please read carefully this guide for setup.

Registration

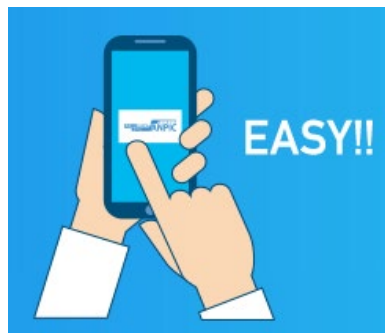


1. Open “Initial Setup Procedure Guide” by reading QR code or clicking URL.



https://www.niigata-u.ac.jp/wp-content/uploads/2019/10/anpic_regist_eng.pdf

2. Follow the Step 1 to Step 6 on Page 1.



Initial Setup Procedure		
Setting the defaults is necessary to ANPIC. We ask that you follow the instructions below, and register your password.		
Mar 2019		
Step 1 Access the initial registration site. https://anpic-niigata-u.jcc.jp/niigata-u/regist <small>*You will not be able to access the above site from feature phones and smart phones that do not support SSL encryption. Please access it through a computer or smart phone that supports SSL.</small>	Step 3 An "initial registration email" will be sent to the email address you registered to ANPIC. Click the URL within the email. <small>*The initial registration email is only valid for two hours. Once this period has passed, start over from step one.</small>	Step 5 A "final registration email" will be sent from ANPIC. Click the URL in the email. <small>*The final registration email is only valid for two hours. Once this period has passed, start over from step one.</small>
Step 2 Enter your login ID and click "次へ[next]". <small>After a login ID is entered, a confirmation screen will be displayed. Please confirm the login ID and click "確認する[confirm]".</small>	Step 4 Enter your password according to the contents of the personal information registration screen and click "登録する[registration]". <small>If needed, register additional email addresses in "メールアドレス[emai address]" 2 or 3.</small>	Step 6 When the registration completion screen is displayed, initial registration has been completed. Move to the login menu and bookmark the page. <small>Once you have completed the initial setup process, please go to the login screen on the website or log in via the app whenever you wish to use ANPIC.</small>

App Installation



1. Install free ANPIC App by searching “ANPIC” in English, “あんぴっく” in Hiragana, or “アンピック” in Katakana.



2. After installation, follow the Step 2 to 5 on Page 2 to configure notification options.

You can receive notification via LINE or App.



ANPIC Simple Operation Guide: LINE/App

Niigata University ANPIC Website
https://anpic-nigata-u.ac.jp/nigata-u/
Login ID: [Students] Student ID number / [Faculty and staff] Staff ID number
Password: Password registered on the initial registration page

Setup Procedure

1. Install the app
On the App Store/Play Store/Google Play, search for "anpic" and install the app.

2. Launch the app and log in

3. Configure notification options

4. Access the website and send a test message

5. Register your email and password

6. Touch the icon to go to the website, and open the Account Settings screen.

7. Register your email address using "メールアドレスを登録する" (Set my email address).

8. Change your password using "パスワードを再入力して設定する" (Set my password again).

9. After changing your password, please be sure to log in to the app using your new password.

How to use ANPIC



1. Take a look at Page 3 to learn how to respond via LINE and report your safety situation etc.

This is a detailed instructional guide for the ANPIC app, presented as a grid of screenshots and text boxes. The guide is divided into several main sections:

- How to respond via LINE:** Includes instructions on how to report a safety situation and how to answer a questionnaire via LINE chat.
- How to use the ANPIC app:** Provides instructions for opening the menu and reporting a safety situation on both iOS and Android devices.
- Answer the questionnaire:** Explains how to answer questionnaires either directly from the app's questionnaire screen or via a URL in a questionnaire email.
- Changing where you receive notifications:** Shows how to change notification settings within the app.
- Troubleshooting:** A section titled 'If notifications are not delivered to LINE or ANPIC app' provides a list of steps to check, such as unlocking the ANPIC account, enabling push notifications, and updating the OS.

The screenshots show the app's interface in both Japanese and English, with green callouts and arrows pointing to specific buttons and options.

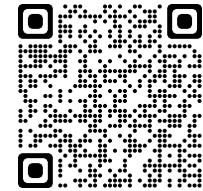
2. If you are not using smartphone but using a flip phone, please follow the instruction on Page 4.

Q & A



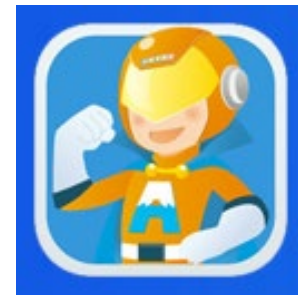
Questions and Answers are available.

https://www.niigata-u.ac.jp/wp-content/uploads/2019/10/anpic_qa_eng.pdf



Contents

1. Logging in
2. Safety reports
3. Notification from ANPIC
4. Bulletin Board
5. Questionnaire
6. User information
7. The App
8. LINE
9. Other



Learn more about ANPIC !